

NOISE SUPPRESSOR

SERVICE to 500°F

- Standard sizes 3/8" to 8". Consult Factory for additional sizes
- Effective over a broad frequency band (up to 12,000 Hz)
- Noise attenuation up to 26 dBA
- Expansion fittings not required
- Straight through design minimizes pressure drop, permitting normal valve sizing

Canadian Registration # OH 6266.51C



NOISE SUPPRESSORS

DIMENSIONS inches (mm) AND WEIGHTS pounds (kg)
INLET SIZE 2 1/2" TO 8"

APPLICATION DATA

- Steam Pressure Reduction Stations where Noise Reduction is Desired

SUPPRESSOR ENDS

| INLET ANSI | OUTLET ANSI |
|------------|-------------|
| NPT | NPT |
| NPT | 150# |
| NPT | 300# |
| 150# | 150# |
| 300# | 150# |
| 300# | 300# |

NOTE: ANSI 150# Flanges are flat faced.

It is recommended that the Noise Suppressor be insulated to reduce condensation formation in the acoustic material.

SIZING INFO
PAGE 285

| NOMINAL PIPE SIZE | | | D* — INSTALLED LENGTH | | | APPROX. WEIGHT | | | Average Attenuation dBa [†] |
|-------------------|----------|----------|-----------------------|---------------|---------------|----------------|-------------|-------------|--------------------------------------|
| A INLET | B OUTLET | C SHELL | 150# X 150# | 300# X 150# | 300# X 300# | 150# X 150# | 300# X 150# | 300# X 300# | |
| 2 1/2 (65) | 4 (100) | 5 (125) | 39 3/4 (1010) | 40 (1016) | 40 3/8 (1025) | 73 (33) | 75 (34) | 85 (39) | 12 |
| 2 1/2 (65) | 5 (125) | 6 (150) | 47 1/4 (1200) | 47 1/2 (1207) | 47 7/8 (1216) | 105 (48) | 108 (49) | 123 (56) | 16 |
| 3 (80) | 4 (100) | 5 (125) | 39 3/4 (1009) | 40 1/8 (1019) | 40 1/2 (1028) | 76 (35) | 82 (37) | 91 (41) | 10 |
| 3 (80) | 5 (125) | 6 (150) | 47 1/4 (1200) | 47 5/8 (1210) | 48 (1219) | 108 (49) | 114 (52) | 129 (59) | 14 |
| 3 (80) | 6 (150) | 8 (200) | 58 1/4 (1480) | 58 5/8 (1489) | 59 (1499) | 174 (798) | 180 (82) | 199 (90) | 19 |
| 4 (100) | 5 (125) | 6 (150) | 47 1/2 (1206) | 47 7/8 (1216) | 48 1/4 (1225) | 113 (51) | 123 (56) | 138 (63) | 12 |
| 4 (100) | 6 (150) | 8 (200) | 54 1/2 (1384) | 54 7/8 (1393) | 55 1/4 (1403) | 175 (80) | 185 (84) | 204 (93) | 15 |
| 4 (100) | 8 (200) | 10 (250) | 66 (1676) | 66 3/8 (1686) | 66 3/4 (1695) | 284 (129) | 294 (134) | 321 (146) | 21 |
| 5 (125) | 6 (150) | 8 (200) | 55 (1397) | 55 3/8 (1406) | 55 3/4 (1416) | 180 (82) | 195 (87) | 214 (97) | 14 |
| 5 (125) | 8 (200) | 10 (250) | 66 1/2 (1689) | 66 7/8 (1698) | 67 1/4 (1708) | 289 (131) | 304 (138) | 331 (150) | 19 |
| 5 (125) | 10 (250) | 12 (300) | 89 (2261) | 89 3/8 (2280) | 90 (2286) | 455 (207) | 470 (214) | 516 (235) | 26 |
| 6 (150) | 8 (200) | 10 (350) | 66 1/2 (1689) | 66 7/8 (1698) | 67 1/4 (1708) | 295 (134) | 314 (143) | 341 (155) | 17 |
| 6 (150) | 10 (250) | 12 (300) | 83 1/2 (2121) | 83 7/8 (2130) | 84 1/2 (2146) | 451 (205) | 470 (214) | 516 (235) | 24 |
| 8 (200) | 10 (250) | 12 (300) | 84 (2134) | 84 3/8 (2143) | 85 (2159) | 468 (213) | 495 (225) | 541 (246) | 21 |

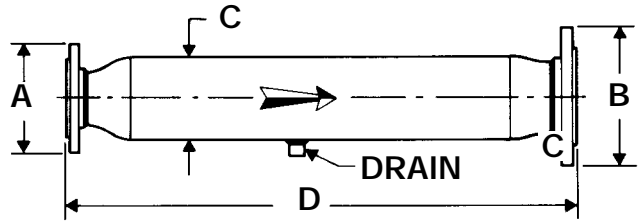
* ±1/4" for 8" Shell and under, otherwise ± 3/8".

† Consult factory for specifics.

NOISE SUPPRESSOR

SPECIFICATION

Noise Suppression equipment shall be of the dissipative reactive type. Suppressor shall not induce back pressure. It shall have expanded outlet flange for attachment to downstream piping. Equipment shall provide a minimum of 10 dBA reduction in noise. Installation must be insulated.



MATERIALS OF CONSTRUCTION

Pressure ShellWelded Steel Components
Acoustic MaterialStainless Steel

MAXIMUM VELOCITY

feet per minute
(meters per minute)

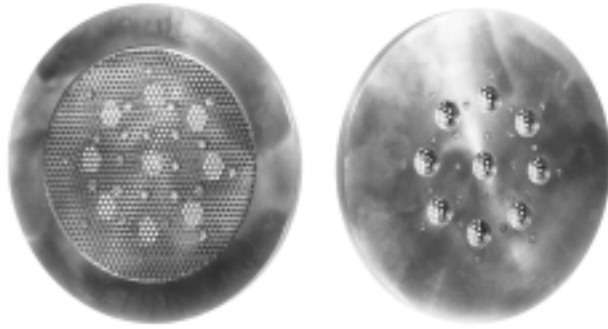
| NOMINAL PIPE SIZE | MAXIMUM VELOCITY |
|-------------------------|------------------|
| 0 - 2 (0 - 51) | 17,000 (5182) |
| 2 1/2 - 8 (64 - 203) | 11,000 (3353) |
| >8 (>203) | 9,000 (2734) |

DIMENSIONS inches (mm) AND WEIGHTS pounds (kg) INLET SIZES 3/8" TO 2"

| NOMINAL PIPE SIZE | | | D* — INSTALLED LENGTH | | | APPROX. WEIGHT | | | | | | Average Attenuation dBa† |
|-------------------|---------------|---------------|----------------------------------|-----------------------|-------------------|-----------------|------------------|------------------|-------------------|-------------------|-------------------|--------------------------|
| A INLET | B OUTLET | C SHELL | NPTxNPT NPTx300# 300#x300# | NPTx150# 300#x150# | 150#x150# | NPT x NPT | NPT x 150# | NPT x 300# | 150# x 150# | 300# x 150# | 300# x 300# | |
| 3/8 (10) | 3/4 (20) | 2 (50) | 19 1/16 (502) | 19 5/8 (498) | — | 8 (3.6) | 9 (4.1) | 10 (4.5) | — | — | — | 16 |
| 3/8 (10) | 1 (25) | 2 (50) | 20 (508) | 19 3/4 (502) | — | 8 (3.6) | 10 (4.5) | 11 (5) | — | — | — | 16 |
| 3/8 (10) | 1 1/2 (40) | 2 1/2 (65) | 22 3/4 (578) | 22 1/2 (572) | — | 12 (5.4) | 15 (6.8) | 18 (8.2) | — | — | — | 19 |
| 1/2 (15) | 1 (25) | 2 (50) | 20 (508) | 19 3/4 (502) | 19 9/16 (140) | 8 (3.6) | 10 (4.5) | 11 (5) | 12 (5.4) | 12 (5.4) | 13 (5.9) | 13 |
| 1/2 (15) | 1 1/4 (32) | 2 1/2 (65) | 22 5/8 (574) | 22 5/16 (565) | 22 1/8 (562) | 12 (5.4) | 13 (5.9) | 16 (7.3) | 15 (6.8) | 15 (6.8) | 17 (7.7) | 16 |
| 1/2 (15) | 1 1/2 (40) | 2 1/2 (65) | 22 3/4 (578) | 22 1/2 (572) | 22 5/16 (565) | 12 (5.45) | 15 (6.8) | 18 (8.2) | 16 (7.3) | 16 (7.3) | 19 (8.6) | 16 |
| 3/4 (20) | 1 1/4 (32) | 2 1/2 (65) | 23 5/16 (591) | 23 (584) | 22 13/16 (578) | 12 (5.4) | 14 (6.4) | 16 (7.3) | 15 (6.8) | 16 (7.3) | 18 (8.2) | 12 |
| 3/4 (20) | 2 (50) | 3 (80) | 26 1/2 (673) | 26 1/4 (667) | 26 1/16 (664) | 16 (7.3) | 21 (9.5) | 23 (10.4) | 22 (10) | 23 (10.4) | 25 (11.4) | 16 |
| 1 (25) | 1 1/2 (40) | 2 1/2 (65) | 21 1/8 (537) | 20 7/8 (530) | 20 5/8 (524) | 13 (5.9) | 16 (7.3) | 19 (8.6) | 18 (8.2) | 19 (8.6) | 22 (10) | 9 |
| 1 (25) | 2 (50) | 3 (80) | 23 11/16 (603) | 26 7/16 (683) | 26 3/16 (666) | 16 (7.3) | 21 (9.5) | 23 (10.4) | 23 (10.4) | 24 (10.9) | 26 (11.8) | 12 |
| 1 1/4 (32) | 2 (50) | 3 (80) | 24 5/16 (616) | 24 1/16 (613) | 23 3/4 (603) | 16 (7.3) | 21 (9.5) | 23 (10.4) | 23 (10.4) | 25 (11.4) | 27 (12.3) | 9 |
| 1 1/4 (32) | 3 (80) | 4 (100) | 34 11/16 (882) | 34 5/16 (879) | 34 (864) | — | 40 (18) | 47 (21.4) | 42 (19) | 45 (20.5) | 51 (23) | 15 |
| 1 1/2 (40) | 3 (80) | 4 (100) | 31 13/16 (807) | 31 7/16 (800) | 31 3/16 (791) | — | 39 (17.7) | 44 (20) | 43 (19.5) | 46 (21) | 52 (23.6) | 13 |
| 2 (50) | 3 (80) | 4 (100) | 31 7/8 (810) | 31 1/2 (800) | 31 1/4 (794) | — | 40 (18) | 46 (21) | 45 (20.5) | 47 (21.4) | 53 (24) | 10 |
| 2 (50) | 4 (100) | 5 (125) | 40 7/8 (1019) | 39 3/4 (1010) | 39 1/2 (1003) | — | 66 (30) | 76 (34.5) | 72 (32.7) | 74 (33.6) | 84 (38.2) | 14 |

* ± 1/4" for 8" Shell and under, otherwise ± 3/8".

† Consult factory for specifics.



INLET OUTLET
MUFFLING ORIFICE

MUFFLING ORIFICE PLATES (MOPS)

- Reduces noise by 6 dBA to 12 dBA
- Engineered for each application
- Designed to fit between ANSI flanges (DIN upon request)
- For noise reduction estimates, consult your Representative.

Canadian Registration # OH 6265.51a

MATERIALS OF CONSTRUCTION

PlateSteel ASTM A285-78 Gr. C.
DiscSt. St. 302-2B

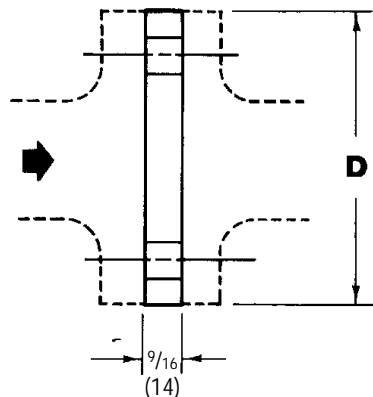
APPLICATION DATA

- Spence Pressure Regulators or Control Valves where noise reduction is desired

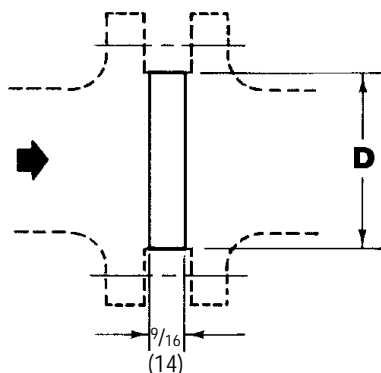
SIZING INFO
PAGE 285

SPECIFICATION

A Muffling Orifice Plate to be constructed of materials suitable for the installation and compatible with the piping. Generally, it is to be of steel construction with stainless steel plate welded to the primary plate. The orifices are to be on the stainless steel plate. Orifice plates are to be designed for installation between two ANSI flanges in the enlarged piping downstream of the regulator or noise suppressor. Muffling Orifice Plates are to be designed to provide between 6 to 12 dBA of noise reduction on a high flow PRV.



ANSI 125 & 150 FLANGED



ANSI 250, 300 & 600 FLANGED

DIMENSIONS inches (mm)

| NOMINAL PIPE SIZE | DIMENSION D | | |
|-------------------|--------------|--|--------------------------------------|
| | ANSI 125 150 | ANSI 250 300 | ANSI 600 |
| 2 (50) | 6 (152) | 4 ³ / ₁₆ (106) | 3 ⁵ / ₈ (92) |
| 2½ (65) | 7 (178) | 4 ¹⁵ / ₁₆ (126) | 4 ¹ / ₈ (105) |
| 3 (75) | 7½ (190) | 5 ¹ / ₁₆ (146) | 5 (127) |
| 4 (100) | 9 (229) | 6 ¹⁵ / ₁₆ (178) | 6 ³ / ₁₆ (156) |
| 5 (125) | 10 (254) | 8 ⁵ / ₁₆ (210) | 7 ⁵ / ₁₆ (184) |
| 6 (150) | 11 (279) | 9 ¹ / ₁₆ (247) | 8½ (216) |
| 8 (200) | 13½ (343) | 11 ¹⁵ / ₁₆ (305) | 10 ⁵ / ₈ (270) |
| 10 (250) | 16 (406) | 14 ¹ / ₁₆ (357) | 12 ³ / ₄ (324) |
| 12 (300) | 19 (483) | 16 ⁷ / ₁₆ (419) | 15 (381) |
| 14 (350) | 21 (533) | 18 ¹⁵ / ₁₆ (481) | 16 ¹ / ₄ (413) |
| 16 (400) | 23½ (597) | 21 ¹ / ₁₆ (534) | 18½ (470) |
| 18 (450) | 25 (635) | 23 ³ / ₁₆ (591) | 21 (533) |

MUFFLING ORIFICE